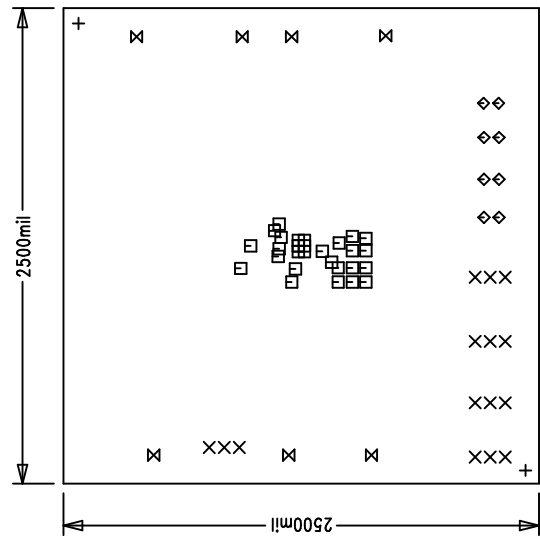


REVISIONS		
REV	APPR	DATE



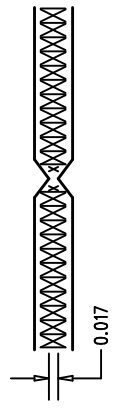
LINEAR TECHNOLOGY CORPORATION
DC970A
LI-COMPONENT SIDE

SIZE	QTY	SYM	PLTD	TOL
70	2	+	NO	+/-0.003
31	15	X	YES	+/-0.003
12	28	□	YES	+/-0.003
35	8	◇	YES	+/-0.003
95	7	⊗	YES	+/-0.003

- ART01 = LAYER 1 (COMPONENT SIDE)
- ART02 = LAYER 2 (GND)
- ART03 = LAYER 3 (GND)
- ART04 = LAYER 4 (SOLDER SIDE)

NOTES : Unless Otherwise Specified

- MATERIAL : FR4 OR EQUIVALENT EPOXY
2 OZ OUTER, 1 OZ INNER COPPER CLAD
THICKNESS .062 +/--.006 TOTAL OF 4 LAYERS
- FINISH : ALL PLATED HOLES .001 MIN. / .0015 MAX. COPPER PLATE
WHITE TIN IMMERSION (OMIKRON) BOTH SIDES.
OR LEAD FREE SOLDER
SOLDER MASK OVER BARE COPPER (SMOBC)
- SOLDER MASK : BOTH SIDES USING GREEN LPI OR EQUIVALENT
- SILKSCREEN : USING WHITE NON-CONDUCTIVE EPOXY INK
- DO NOT ALTER ARTWORK e.g. TO ADD LOGO, DATE,OR TEST CODE.
- ALL DIMENSIONS ARE IN INCHES
- SCORING (FOR PRODUCTION BOARD)



Fabrication Drawing

APPROVALS <table border="1"> <tr> <th>DRAWN</th> <th>INT</th> <th>DATE</th> </tr> <tr> <td>Antonia K</td> <td></td> <td></td> </tr> </table>		DRAWN	INT	DATE	Antonia K			LINEAR TECHNOLOGY 1630 McCarthy Blvd. Milpitas, CA 95035 PH: (408)432-1900	
		DRAWN	INT	DATE					
Antonia K									
TITLE: LTC3541EDD/LTC3541EDD-1 High Efficiency, Low Noise, Step-Down DC/DC Regulator									
SIZE NONE Demo Circuit 970A REV. 3		DESIGN # DC970A.DSN SHT 1 of 1							